



DAMEN MULTI CAT® 1908 "DENIS MURPHY"

GENERAL

YARD NUMBER	518504
DELIVERY DATE	January 2005
BASIC FUNCTIONS	Towing, plough dredging, buoy handling and anchor handling.
CLASSIFICATION	✳ 100 A1 Launch Irish Coastal service
FLAG	Ireland
OWNER	Port of Cork Company, Ireland

DIMENSIONS

LENGTH O.A.	18.85 m
BEAM O.A.	8.36 m
DEPTH AT SIDES	2.75 m
DRAUGHT AFT	2.32 m
DISPLACEMENT	216 ton

TANK CAPACITIES

FUEL OIL	54.1 m ³
FRESH WATER	14.8 m ³
WATER BALLAST	13.0 m ³
DISPERSANT	0.9 m ³
LUBRICATION OIL	0.8 m ³
DIRTY OIL	0.9 m ³
SEWAGE	0.9 m ³

PERFORMANCES (TRIALS)

BOLLARD PULL AHEAD	12.4 ton(m)
SPEED	8.9 knots

PROPULSION SYSTEM

MAIN ENGINES	2x Caterpillar 3408C TA/B
TOTAL POWER	716 bkW (960 bhp) at 1800 rpm
GEARBOXES	2x Reintjes WAF 164 1:3.969
PROPULSION	2x Promarin fixed pitch propellers
NOZZLES	2x 1300 mm Van de Giessen with st.st. innerring

AUXILIARY EQUIPMENT

GENERATOR SETS	2 x Lister DWS 4, 30 kVA, 400 V / 50 Hz
BATTERY SETS	3 x 24 V 200 Ah, change over facility
BILGE PUMP	2 x Sterling VWSI 5013, 24 m ³ /hr
HYDROPHORE	Speck PY-2071/20
CARGO TRANSFER PUMPS	2x Sterling, AKHA 6101, 32 m ³ /hr for fresh water and fuel
DISPERSANT SYSTEM	Megator DP-20, 90 l/min water/dispersant mix
WORKING AIR COMPRESSOR	Eurocomp EPC 440-100 16.8 m ³ /hr

DECK LAY-OUT

A-FRAME	20 ton SWL for plough dredging with Kraayeveld hoisting winch, 14 ton at 16 m/min
DREDGING PLOUGH	Heavy duty, 8 m wide
DECK CRANE	Hydraulic Effer 80.000 – 3S 9.4 ton at 8.34 m
WINCH ON HYDR. CRANE	Capacity 5.0 ton SWL
ANCHOR HANDLING WINCH	Kraaijeveld, 20 ton at 5 m/min
BOW ROLLER	Diameter 900 mm-2500 mm width
MOORING WINCHES	4 x Kraayeveld, 2 ton at 15 m/min
TOWING HOOK	Mampaey, 15 ton SWL
BUOY HANDLING CLAMP	For 1 inch, 1.5 inch and 2 inch chain

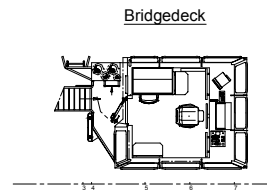
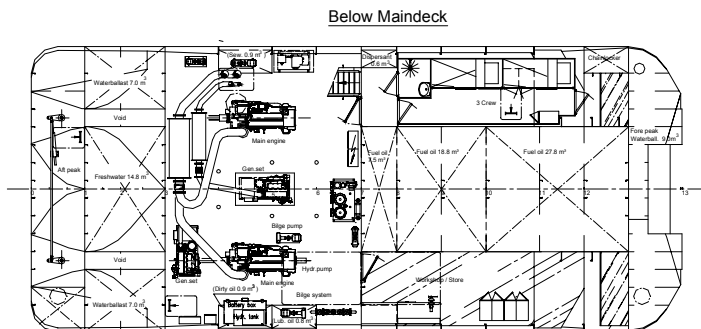
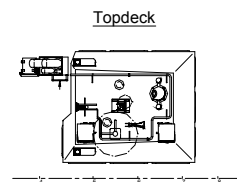
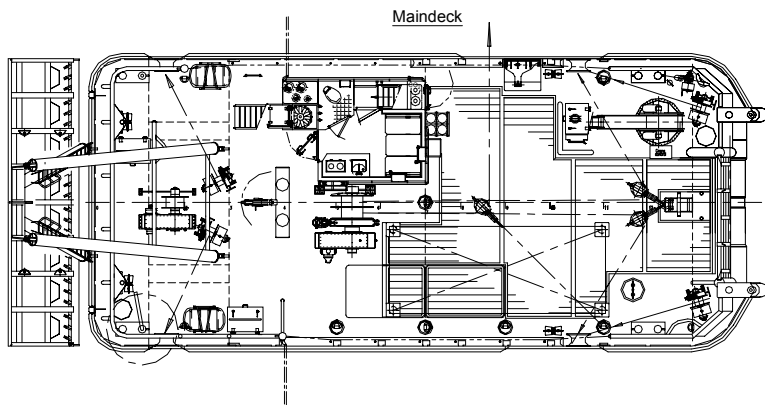
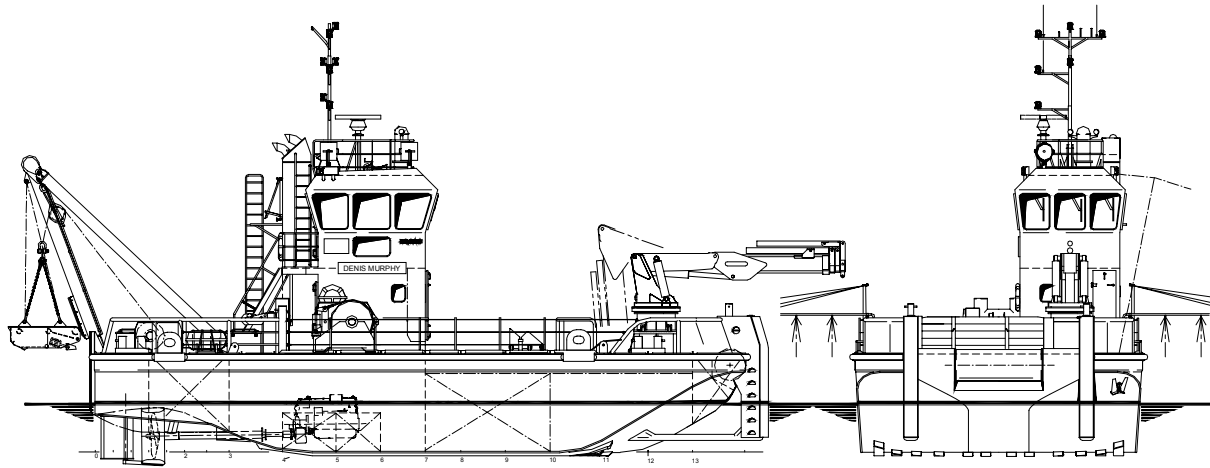
ACCOMMODATION

Wheelhouse, day-room /pantry , crew cabin for 3 persons and sanitary spaces with toilet and shower. A workshop/store below deck. The work deck is covered with wood, deck load 5 t/m².

NAUTICAL AND COMMUNICATION EQUIPMENT

RADAR SYSTEM	Furuno FR-1505 MkIII
SEARCHLIGHT	2x Pesch 650 W
COMPASS	Kotter type
VIDEO PLOTTER	Furuno GD-1900C
GPS	GP-320B Integrated in video plotter
ECHO SOUNDER	Furuno FE-700
SPEED LOG	Furuno DS-80
VHF	Sailor RT4822
HAND HELD VHF	2 x Tron Tr-20
AIS	Furuno FA-100

DAMEN



DAMEN MULTI CAT[®] 1908

"DENIS MURPHY"

DAMEN

DAMEN SHIPYARDS GORINCHEM

Member of the DAMEN SHIPYARDS GROUP



Industrieterrein Avelingen West 20
4202 MS Gorinchem

P.O. Box 1
4200 AA Gorinchem
The Netherlands

phone +31 (0)183 63 99 11
fax +31 (0)183 63 21 89

info@damen.nl
www.damen.nl