



PORT OF CORK COMPANY

Incident Management

Port of Cork
Harbourmaster@portofcork.ie

RAISING THE ALARM

An emergency or incident may be discovered and reported through any number of sources:

- the person/organisation directly involved
- a member of the public
- one of the Emergency Services/Principal Response Agencies (PRA) (*An Garda Síochána, Cork City and County Fire and Rescue Services, HSE/NAS (National Ambulance Service) or Irish Coast Guard*).

When an emergency or potential emergency occurs, it is vital that the alarm be raised immediately.

The initial call should always be directed to the relevant Emergency Service.

HOW TO ALERT THE EMERGENCY SERVICES (PRAs)

- ❖ CALL 112 or 999 FOR EMERGENCY SERVICES.

HOW TO ALERT THE PORT DIRECTLY

- ❖ CALL PORT OPERATIONS +353 21 4811380 (MANNED 24HRS)

IN ALL CIRCUMSTANCES, PLEASE STATE THE TYPE OF EMERGENCY.

IF POSSIBLE, USE THE FOLLOWING FORMAT

- **E** – Exact location and type of incident
- **T** – Type of incident (ship/aircraft/other, fire, spill/release of chemical/oil/gas)
- **H** – Hazards involved (type and nature of substance)
- **A** – Access to Scene (approach route/staging area/hazards)
- **N** – Number and severity of casualties
- **E** – Emergency Services required or responding

The Port of Cork Company has several detailed plans that can be activated to respond to incidents and emergencies should they arise. As part of our emergency planning and protocols, the Port Company has the following internal emergency plans.

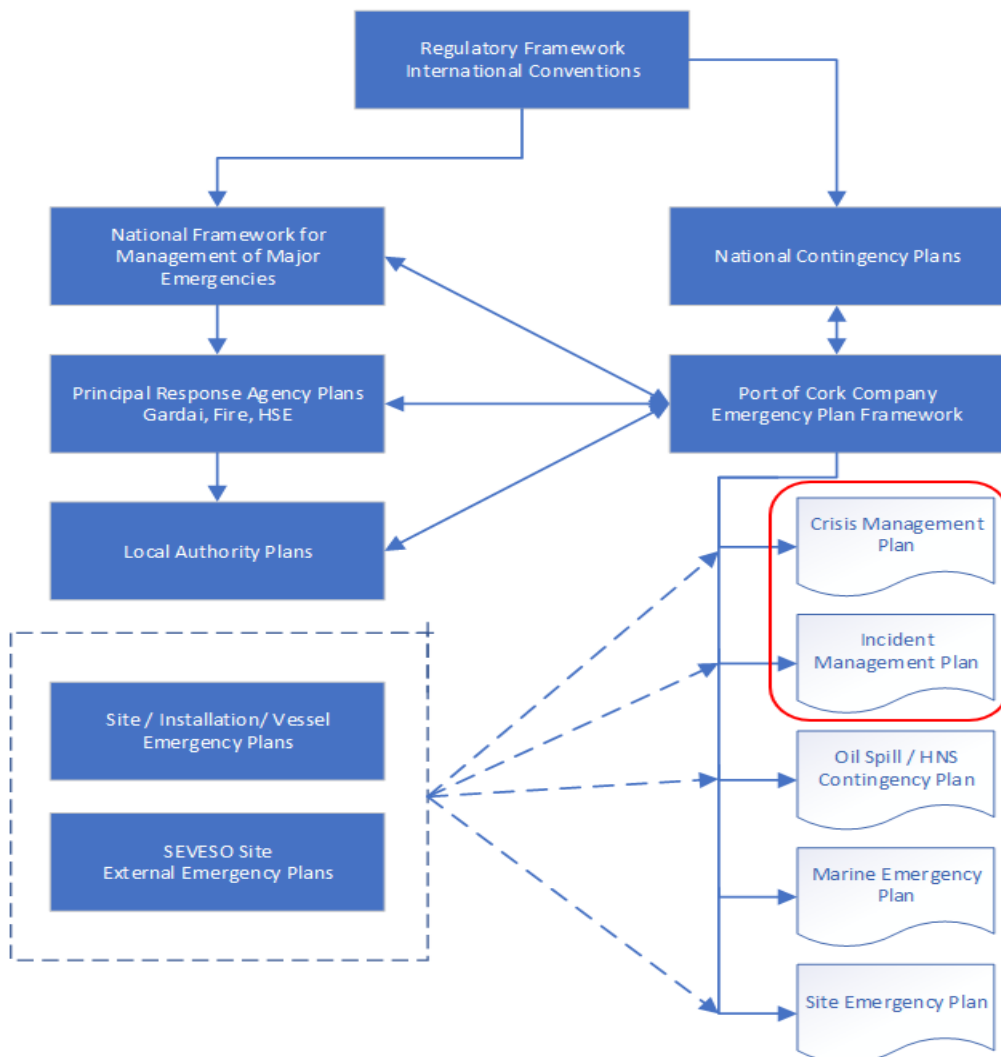
The plans are restricted documents due to the nature of the details regarding port security.

- Crisis Management Plan
- Incident Management Plan
- Oil spill contingency plan
- Marine Incident plan
- Port Security Plans

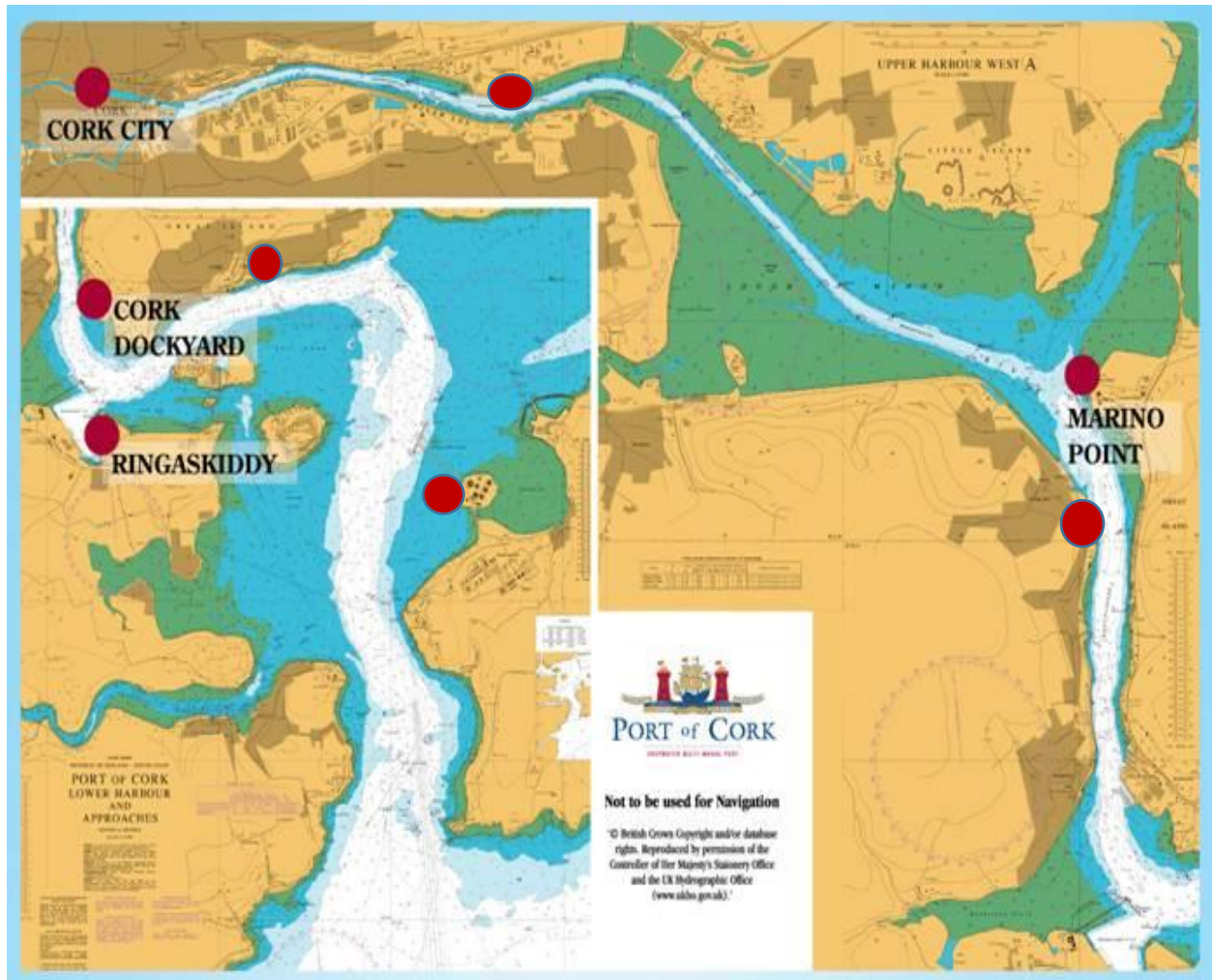
The plans listed above are written in a format developed under the Framework for Emergency Management and dovetail to the wider regional Major Emergency Plan which is under the control of the Inter Agency Emergency Management Office (IAEMO).

<https://www.iaemo.ie/>

The IAEMO hold copies of all Port of Cork Company plans which can be used to support the Principal Response Agencies in the event of an incident on or adjacent to the Port.



MAP CORK HARBOUR



For Further Information on emergency planning, please contact the Harbour Masters Department

Harbourmaster@portofcork.ie

Thank you