

Passage Plan I I
Pilot Station No. 2 to Marino Point (10.9')

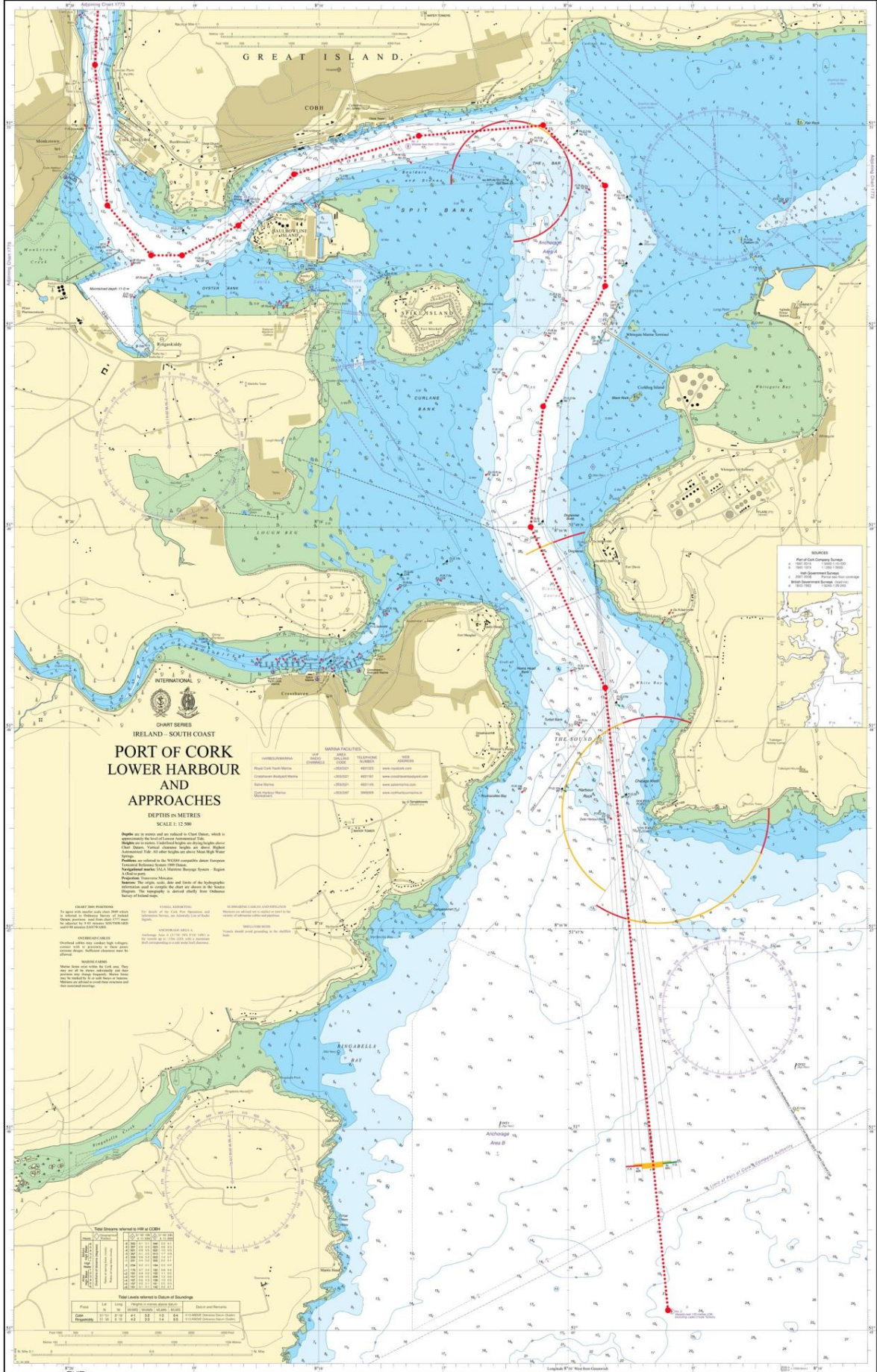
w/p	Description	Latitude	Longitude	Co.°T	Dist'	Remarks
1	Pilot Station No. 2	51°45.10'N	008°15.20'W	355	3.1'	<ul style="list-style-type: none"> Board vessel exchange Pilot / Master Information Brief Master on Passage Plan Report to Cork Harbour Radio Ch 12 for traffic update Contact Tugs (if applicable) and inform of intentions Report to Cork Harbour Radio Ch 12 on passing Roches Point
2	White Bay	51°48.20'N	008°15.70'W	335	0.9'	
3	Off No. 5 Buoy	51°49.00'N	008°16.30'W	006	0.6'	
4	Off No. 7 Buoy	51°49.60'N	008°16.20'W	027	0.7'	<ul style="list-style-type: none"> Reduce speed passing Whitegate Marine Terminal
5	Off No. 9 Buoy	51°50.20'N	008°15.70'W	000	0.5'	
6	Off No. 11 Buoy	51°50.70'N	008°15.70'W	314	0.4'	
7	Off No. 13 Buoy	51°51.00'N	008°16.20'W	265	0.6'	
8	Off No. 20 Buoy	51°50.95'N	008°17.20'W	253	0.7'	
9	Spencers Jetty	51°50.75'N	008°18.20'W	228	0.5'	
10	Off White Point	51°50.50'N	008°18.65'W	242	0.4'	
11	Off Black Point	51°50.35'N	008°19.10'W	270	0.2'	
12	Off Pfizers Jetty	51°50.35'N	008°19.35'W	319	0.3'	
13	Monkstown Bay	51°50.60'N	008°19.70'W	355	0.7'	<ul style="list-style-type: none"> Call Jetty and confirm berth and ETA at berth
14	Off Summer Point	51°51.30'N	008°19.80'W	005	0.7	
15	Off Passage West	51°52.00'N	008°19.70'W	343	0.6	
16	Marino Point Jetty	51°52.50'N	008°19.95'W			<ul style="list-style-type: none"> Report to Cork Harbour Radio when fast alongside

Speed

Safe speed shall be observed throughout the execution of this passage. The speed shall be determined taking into account all prevailing circumstances and conditions including, the visibility, draft and manoeuvrability of the vessel, any port regulations and any other limitations applicable.

Important Notes

- 26 The Pilotage Passage Plan shown above is merely a recommendation of the preferred route to be taken by vessels when navigating in the indicated areas and any Pilot / Master should exercise his own discretion and be prepared to deviate from the plan when circumstances dictate so.
- 27 This Passage Plan should be used in conjunction with the vessels own Plan. The vessels Bridge Management Team should monitor the passage throughout the operation using all available means, these shall include, but not be limited to, use of **parallel indexing techniques**.
- 28 Vessels are berthed Port or Starboard side alongside depending on the prevailing circumstances and conditions



IRISH NAVY
INTERNATIONAL S
CHART SERIES
IRELAND - SOUTH COAST
**PORT OF CORK
LOWER HARBOUR
AND
APPROACHES**
DEPTHS IN METRES
SCALE 1:5000

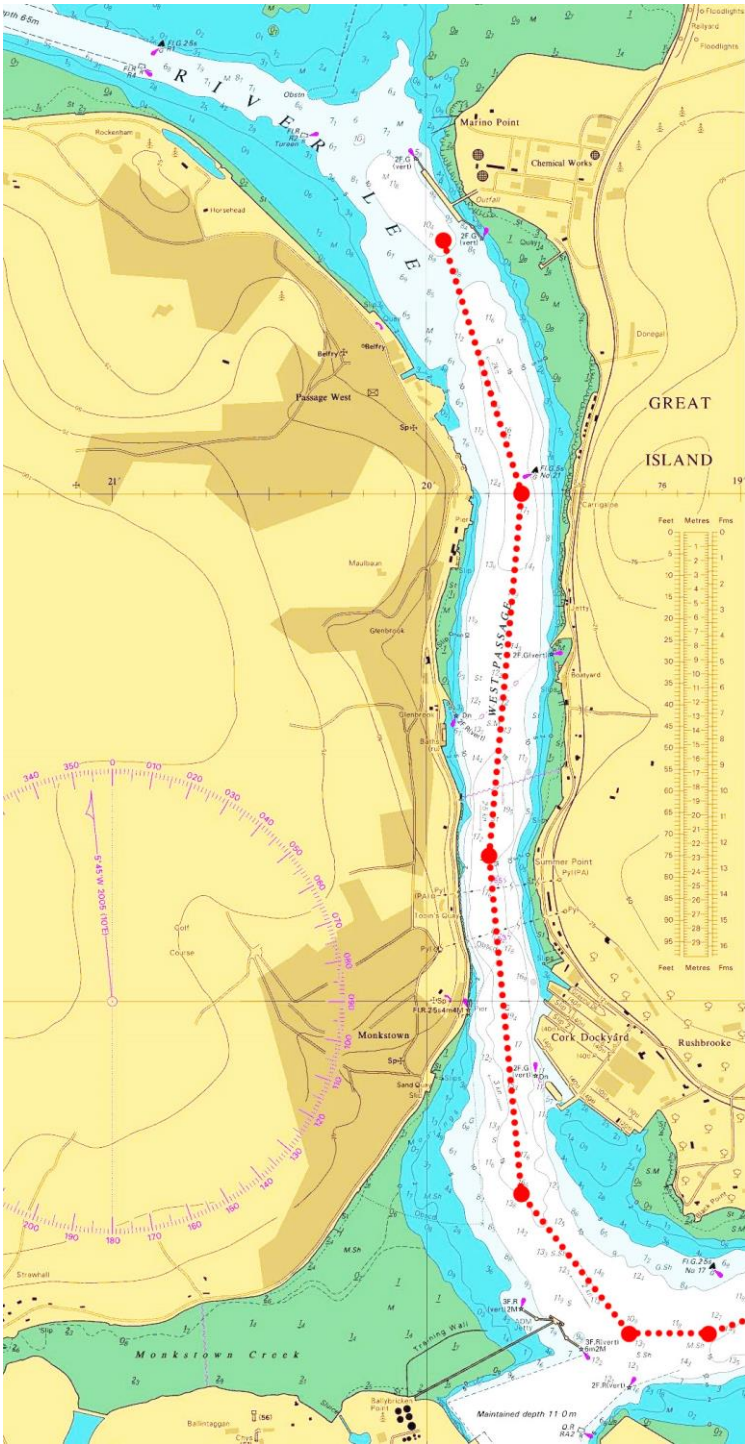
MARK	NO.	CHARACTER	POSITION	HEIGHT	DATE
UNASSIGNED	1000	RED BUOY	51° 45' 00" N, 10° 05' 00" W	10.0	1998
UNASSIGNED	1001	RED BUOY	51° 45' 00" N, 10° 05' 00" W	10.0	1998
UNASSIGNED	1002	RED BUOY	51° 45' 00" N, 10° 05' 00" W	10.0	1998
UNASSIGNED	1003	RED BUOY	51° 45' 00" N, 10° 05' 00" W	10.0	1998
UNASSIGNED	1004	RED BUOY	51° 45' 00" N, 10° 05' 00" W	10.0	1998
UNASSIGNED	1005	RED BUOY	51° 45' 00" N, 10° 05' 00" W	10.0	1998
UNASSIGNED	1006	RED BUOY	51° 45' 00" N, 10° 05' 00" W	10.0	1998
UNASSIGNED	1007	RED BUOY	51° 45' 00" N, 10° 05' 00" W	10.0	1998
UNASSIGNED	1008	RED BUOY	51° 45' 00" N, 10° 05' 00" W	10.0	1998
UNASSIGNED	1009	RED BUOY	51° 45' 00" N, 10° 05' 00" W	10.0	1998
UNASSIGNED	1010	RED BUOY	51° 45' 00" N, 10° 05' 00" W	10.0	1998

DEPTH MEASUREMENTS
In metres and are referred to Chart Datum, which is the mean low water level of the tide on the spring tides. Vertical clearance heights are shown in metres above Chart Datum. Vertical clearance heights are shown in metres above Chart Datum. Vertical clearance heights are shown in metres above Chart Datum. Vertical clearance heights are shown in metres above Chart Datum.

VERTICAL DATUM
The datum used for the measurement of depths is the mean low water level of the tide on the spring tides. The datum used for the measurement of depths is the mean low water level of the tide on the spring tides. The datum used for the measurement of depths is the mean low water level of the tide on the spring tides.

CHART DATUM
The datum used for the measurement of depths is the mean low water level of the tide on the spring tides. The datum used for the measurement of depths is the mean low water level of the tide on the spring tides. The datum used for the measurement of depths is the mean low water level of the tide on the spring tides.

MARK	NO.	CHARACTER	POSITION	HEIGHT	DATE
UNASSIGNED	1000	RED BUOY	51° 45' 00" N, 10° 05' 00" W	10.0	1998
UNASSIGNED	1001	RED BUOY	51° 45' 00" N, 10° 05' 00" W	10.0	1998
UNASSIGNED	1002	RED BUOY	51° 45' 00" N, 10° 05' 00" W	10.0	1998
UNASSIGNED	1003	RED BUOY	51° 45' 00" N, 10° 05' 00" W	10.0	1998
UNASSIGNED	1004	RED BUOY	51° 45' 00" N, 10° 05' 00" W	10.0	1998
UNASSIGNED	1005	RED BUOY	51° 45' 00" N, 10° 05' 00" W	10.0	1998
UNASSIGNED	1006	RED BUOY	51° 45' 00" N, 10° 05' 00" W	10.0	1998
UNASSIGNED	1007	RED BUOY	51° 45' 00" N, 10° 05' 00" W	10.0	1998
UNASSIGNED	1008	RED BUOY	51° 45' 00" N, 10° 05' 00" W	10.0	1998
UNASSIGNED	1009	RED BUOY	51° 45' 00" N, 10° 05' 00" W	10.0	1998
UNASSIGNED	1010	RED BUOY	51° 45' 00" N, 10° 05' 00" W	10.0	1998



© UKHO - Not to be used for Navigation