

Passage Plan 12
Marino Point to Pilot Station No. 2 (10.5')

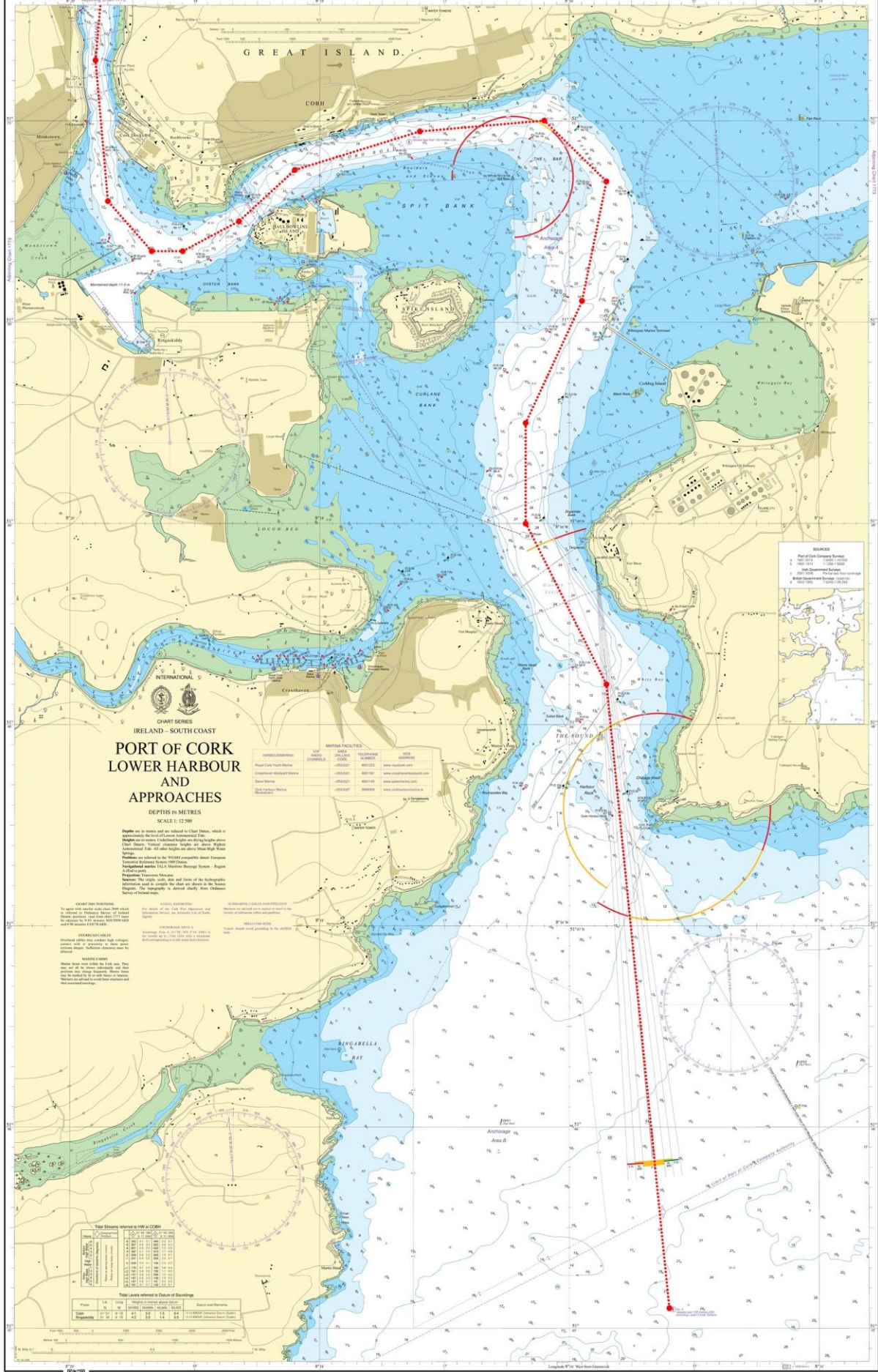
w/p	Description	Latitude	Longitude	Co.°T	Dist	Remarks
1	Marino Point Jetty	51°52.50'N	008°19.95'W	163	0.6	<ul style="list-style-type: none"> • Call Cork Harbour Radio and advise of intended departure. Request traffic update • Call Jetty personnel and advise of intentions • Call tugs and advise of intentions (if applicable)
2	Off No. 21 Buoy	51°52.00'N	008°19.70'W	185	0.7	
3	Off Summer Point	51°51.30'N	008°19.80'W	175	0.7	
4	Monkstown Bay	51°50.60'N	008°19.70'W	140	0.4'	
5	Off Pfizer Jetty	51°50.35'N	008°19.25'W	090	0.1'	
6	Off Black Point	51°50.35'N	008°19.10'W	064	0.3'	
7	Off White Point	51°50.50'N	008°18.60'W	055	0.5'	
8	Off DWQ	51°50.80'N	008°17.90'W	077	0.4'	
9	Off No. 20 Buoy	51°50.90'N	008°17.20'W	085	0.6'	
10	Off No. 18 Buoy	51°50.95'N	008°16.20'W	137	0.4'	
11	Off No. 16 Buoy	51°50.70'N	008°15.75'W	186	0.6'	
12	Off No. 14 Buoy	51°50.10'N	008°15.90'W	205	0.7'	<ul style="list-style-type: none"> • Reduced speed passing Whitegate Marine Terminal
13	E. of Curlane Bank	51°49.50'N	008°16.35'W	180	0.5'	
14	Off No. 5 Buoy	51°49.00'N	008°16.35'W	153	0.9'	
15	Off No. 3 Buoy	51°48.20'N	008°15.70'W	175	3.1'	<ul style="list-style-type: none"> • Call Cork Harbour Radio when passing Roches Point Outward • Reduce speed to 6-8 knots for Pilot Disembarkation
16	Pilot Station No.2	51°45.10'N	008°15.20'W			

Speed

Safe speed shall be observed throughout the execution of this passage. The speed shall be determined taking into account all prevailing circumstances and conditions including, the visibility, draft and manoeuvrability of the vessel, any port regulations and any other limitations applicable.

Important Notice

- 29 The Pilotage Passage Plan shown above is merely a recommendation of the preferred route to be taken by vessels when navigating in the indicated areas and any Pilot / Master should exercise his own discretion and be prepared to deviate from the plan when circumstances dictate so.
- 30 This Passage Plan should be used in conjunction with the vessels own Plan. The vessels Bridge Management Team should monitor the passage throughout the operation using all available means, these shall include, but not be limited to, use of **parallel indexing techniques**.



IRLAND - SOUTH COAST
**PORT OF CORK
LOWER HARBOUR
AND APPROACHES**
DEPTHS IN METRES
SCALE 1:12 500

Table with 4 columns: Name, Type, Reference, and Website. Lists various Marina Facilities.

Depths are in metres and are referred to Chart Datum, which is approximately the level of Lowest Astronomical Tide. Heights are in metres. Vertical clearance heights are shown. Highest astronomical tide is 0.5 metres higher than Chart Datum. The datum used is the WGS84 datum. The datum used is the WGS84 datum. The datum used is the WGS84 datum.

CHART DATA INFORMATION
This chart is based on the latest available information. It is subject to change without notice. The Admiralty is not responsible for any loss or damage arising from the use of this chart.

UNDESIRABLE EFFECTS
This chart is based on the latest available information. It is subject to change without notice. The Admiralty is not responsible for any loss or damage arising from the use of this chart.

MAINTENANCE OF CHARTS
This chart is based on the latest available information. It is subject to change without notice. The Admiralty is not responsible for any loss or damage arising from the use of this chart.

CHART DATA INFORMATION
This chart is based on the latest available information. It is subject to change without notice. The Admiralty is not responsible for any loss or damage arising from the use of this chart.

UNDESIRABLE EFFECTS
This chart is based on the latest available information. It is subject to change without notice. The Admiralty is not responsible for any loss or damage arising from the use of this chart.

MAINTENANCE OF CHARTS
This chart is based on the latest available information. It is subject to change without notice. The Admiralty is not responsible for any loss or damage arising from the use of this chart.

CHART DATA INFORMATION
This chart is based on the latest available information. It is subject to change without notice. The Admiralty is not responsible for any loss or damage arising from the use of this chart.

UNDESIRABLE EFFECTS
This chart is based on the latest available information. It is subject to change without notice. The Admiralty is not responsible for any loss or damage arising from the use of this chart.

MAINTENANCE OF CHARTS
This chart is based on the latest available information. It is subject to change without notice. The Admiralty is not responsible for any loss or damage arising from the use of this chart.

CHART DATA INFORMATION
This chart is based on the latest available information. It is subject to change without notice. The Admiralty is not responsible for any loss or damage arising from the use of this chart.

UNDESIRABLE EFFECTS
This chart is based on the latest available information. It is subject to change without notice. The Admiralty is not responsible for any loss or damage arising from the use of this chart.

MAINTENANCE OF CHARTS
This chart is based on the latest available information. It is subject to change without notice. The Admiralty is not responsible for any loss or damage arising from the use of this chart.

CHART DATA INFORMATION
This chart is based on the latest available information. It is subject to change without notice. The Admiralty is not responsible for any loss or damage arising from the use of this chart.

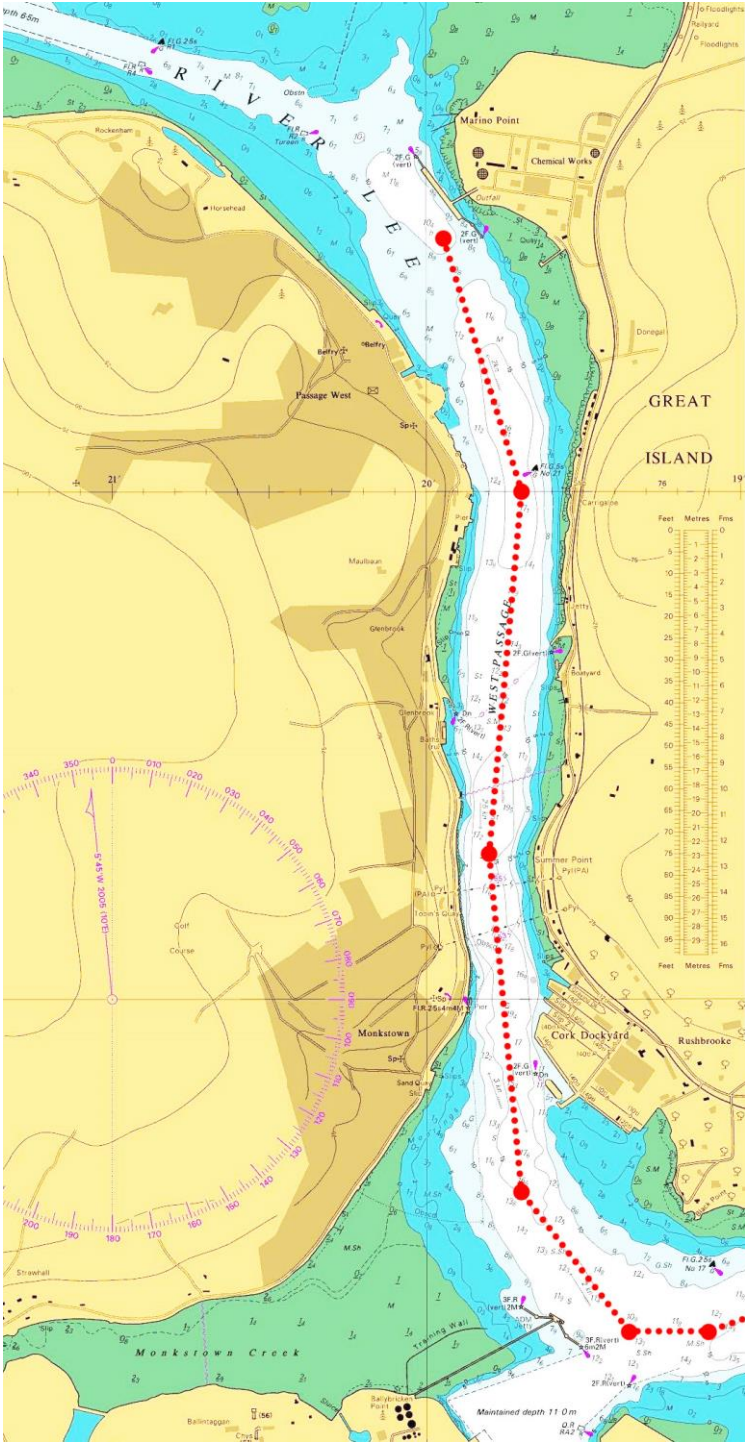
UNDESIRABLE EFFECTS
This chart is based on the latest available information. It is subject to change without notice. The Admiralty is not responsible for any loss or damage arising from the use of this chart.

MAINTENANCE OF CHARTS
This chart is based on the latest available information. It is subject to change without notice. The Admiralty is not responsible for any loss or damage arising from the use of this chart.

CHART DATA INFORMATION
This chart is based on the latest available information. It is subject to change without notice. The Admiralty is not responsible for any loss or damage arising from the use of this chart.

UNDESIRABLE EFFECTS
This chart is based on the latest available information. It is subject to change without notice. The Admiralty is not responsible for any loss or damage arising from the use of this chart.

MAINTENANCE OF CHARTS
This chart is based on the latest available information. It is subject to change without notice. The Admiralty is not responsible for any loss or damage arising from the use of this chart.



© UKHO - Not to be used for Navigation