

Passage Plan No. 14
Tivoli to Pilot Station No. 2 (14.4')

w/p	Description	Latitude	Longitude	Co.°T	Dist	Remarks
1	Tivoli Terminal	51°54.02'N	008°25.00'W	106	0.1	<ul style="list-style-type: none"> • Call Cork Harbour Radio and advise of intended departure. Request traffic update • Call shore mooring personnel and advise of intentions • Call tugs and advise of intentions (if applicable) • Speed limit of 6 Kts exists until Blackrock Castle
2	Tivoli Ro/Ro	51°53.96'N	008°24.80'W	078	0.2	
3	Blackrock Castle (West)	51°54.06'N	008°24.50'W	079	0.3	
4	Blackrock Castle (East)	51°54.10'N	008°24.00'W	108	0.3	
5	R14	51°53.95'N	008°23.45'W	133	1.2	
6	R5	51°53.15'N	008°22.06'W	118	0.3	
7	R3	51°53.00'N	008°21.60'W	103	0.4	
8	R1	51°52.85'N	008°20.85'W	114	0.4	
9	R2	51°52.70'N	008°20.30'W	129	0.3	
10	S. dn @ Marino Point	51°52.50'N	008°19.90'W	164	0.6	
11	Passage West	51°52.00'N	008°19.70'W	185	0.7	<ul style="list-style-type: none"> • If required adjust speed passing Cross River Ferry
12	Off Summer Point	51°51.30'N	008°19.80'W	175	0.7	
13	Monkstown Bay	51°50.60'N	008°19.70'W	140	0.4'	
14	Off Pfizer Jetty	51°50.35'N	008°19.25'W	090	0.1'	
15	Off Black Point	51°50.35'N	008°19.10'W	064	0.3'	
16	Off White Point	51°50.50'N	008°18.60'W	055	0.5'	
17	Off DWQ	51°50.80'N	008°17.90'W	077	0.4'	
18	Off No. 20 Buoy	51°50.90'N	008°17.20'W	085	0.6'	
19	Off No. 18 Buoy	51°50.95'N	008°16.20'W	137	0.4'	
20	Off No. 16 Buoy	51°50.70'N	008°15.75'W	186	0.6'	
21	Off No. 14 Buoy	51°50.10'N	008°15.90'W	205	0.7'	<ul style="list-style-type: none"> • Reduced speed passing Whitegate Marine Terminal
22	E. of Curlane Bank	51°49.50'N	008°16.35'W	180	0.5'	
23	Off No. 5 Buoy	51°49.00'N	008°16.35'W	153	0.9'	
24	Off No. 3 Buoy	51°48.20'N	008°15.70'W	175	3.1'	
25	Pilot Station No.2	51°45.10'N	008°15.20'W			<ul style="list-style-type: none"> • Call Cork Harbour Radio when passing Roches Point Outward

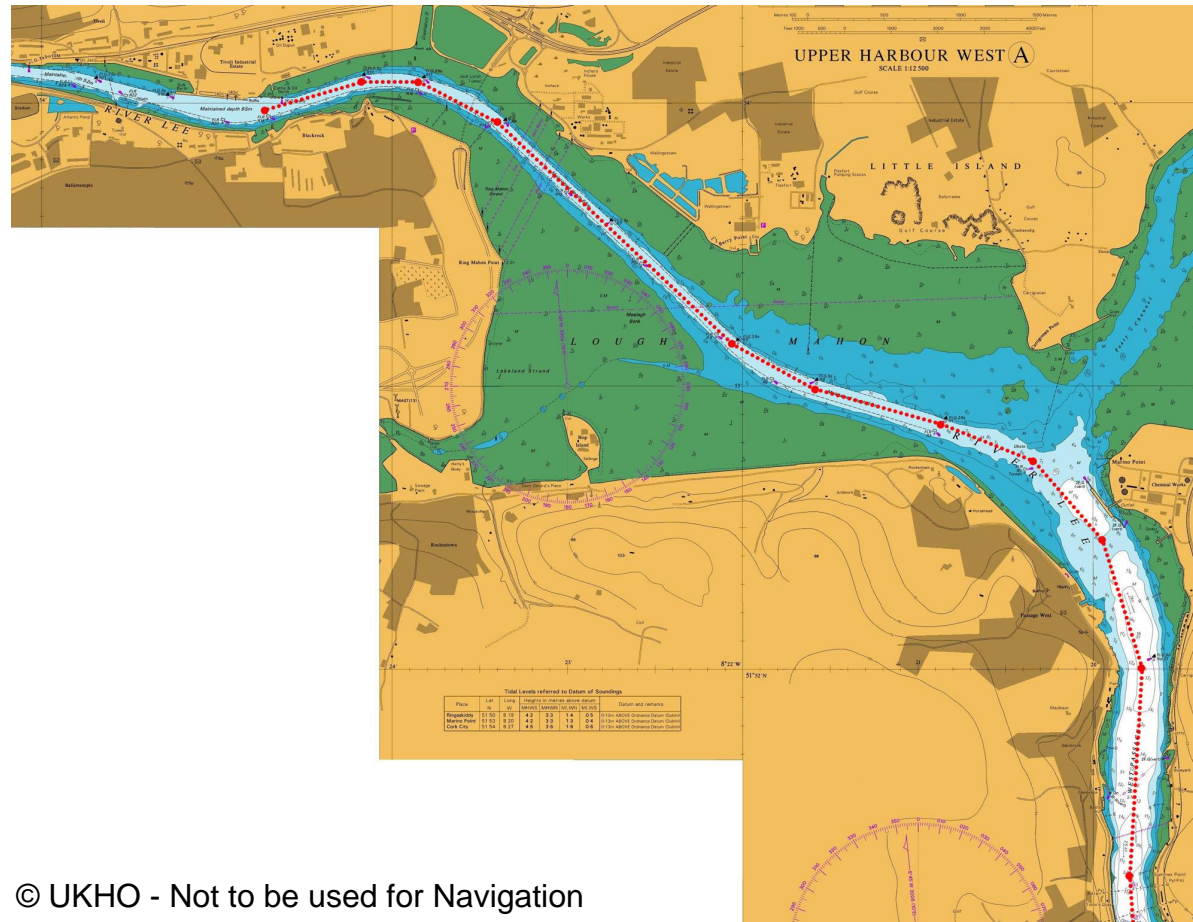
- Reduce speed to 6-8 knots for Pilot Disembarkation

Speed

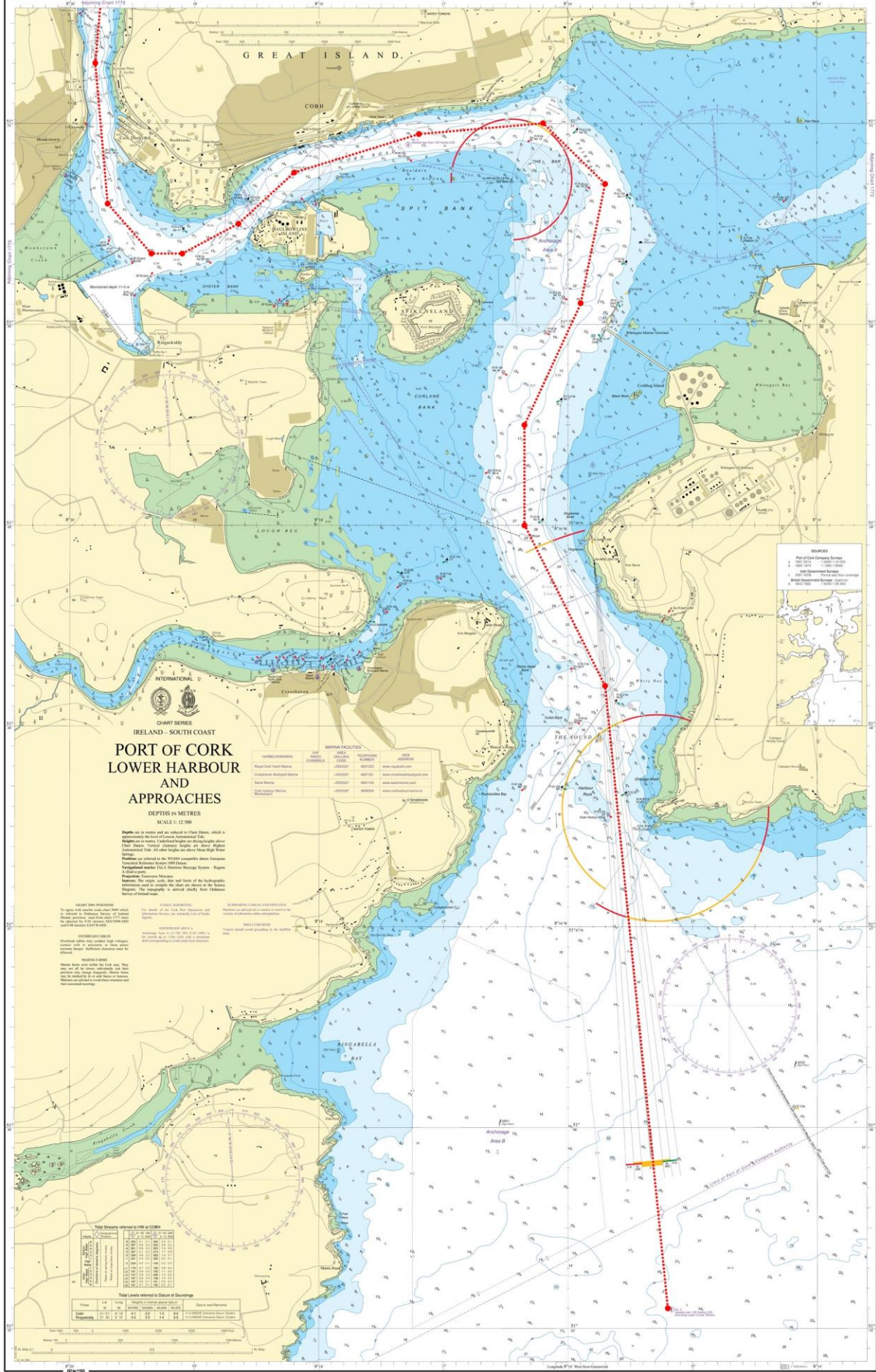
Safe speed shall be observed throughout the execution of this passage. The speed shall be determined taking into account all prevailing circumstances and conditions including, the visibility, draft and manoeuvrability of the vessel, any port regulations and any other limitations applicable.

Important Notice

- 34 The Pilotage Passage Plan shown above is merely a recommendation of the preferred route to be taken by vessels when navigating in the indicated areas and any Pilot / Master should exercise his own discretion and be prepared to deviate from the plan when circumstances dictate so.
- 35 This Passage Plan should be used in conjunction with the vessels own Plan. The vessels Bridge Management Team should monitor the passage throughout the operation using all available means, these shall include, but not be limited to, use of **parallel indexing techniques**.



© UKHO - Not to be used for Navigation



PORT OF CORK LOWER HARBOUR AND APPROACHES
DEPTHS IN METRES
SCALE 1:12 500

WATER SERVICES

NAME	TYPE	CONTACT	WEBSITE
Port of Cork Ferry Service	Passenger	021 490 2000	www.portofcork.com
Port of Cork Boat Service	Passenger	021 490 2000	www.portofcork.com
Port of Cork Boat Service	Passenger	021 490 2000	www.portofcork.com
Port of Cork Boat Service	Passenger	021 490 2000	www.portofcork.com

CHART DATA
This chart is a reproduction of the original chart published by the Hydrographic Office of the United Kingdom. It is not to be used for navigation. The Hydrographic Office of the United Kingdom is not responsible for any errors or omissions in this chart. The Hydrographic Office of the United Kingdom is not responsible for any damage or loss of life or property resulting from the use of this chart.

Tide Tables

Place	Lat	Long	Height in metres above datum	Colour and Remarks
High Water	51° 55' N	10° 05' W	10.5	Blue
Low Water	51° 55' N	10° 05' W	2.5	Red
Spring Tides	51° 55' N	10° 05' W	8.0	Blue
Neap Tides	51° 55' N	10° 05' W	4.0	Red