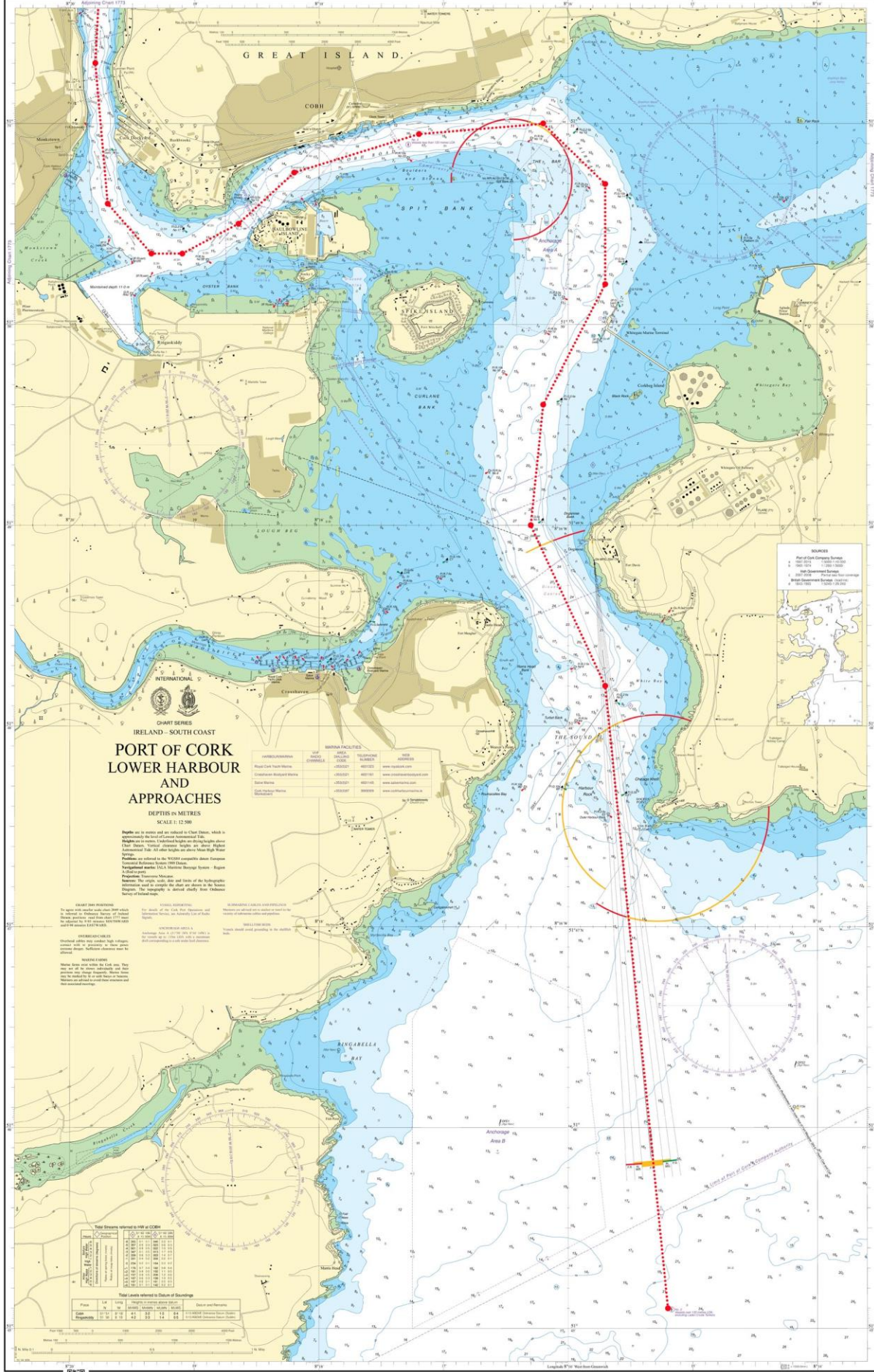
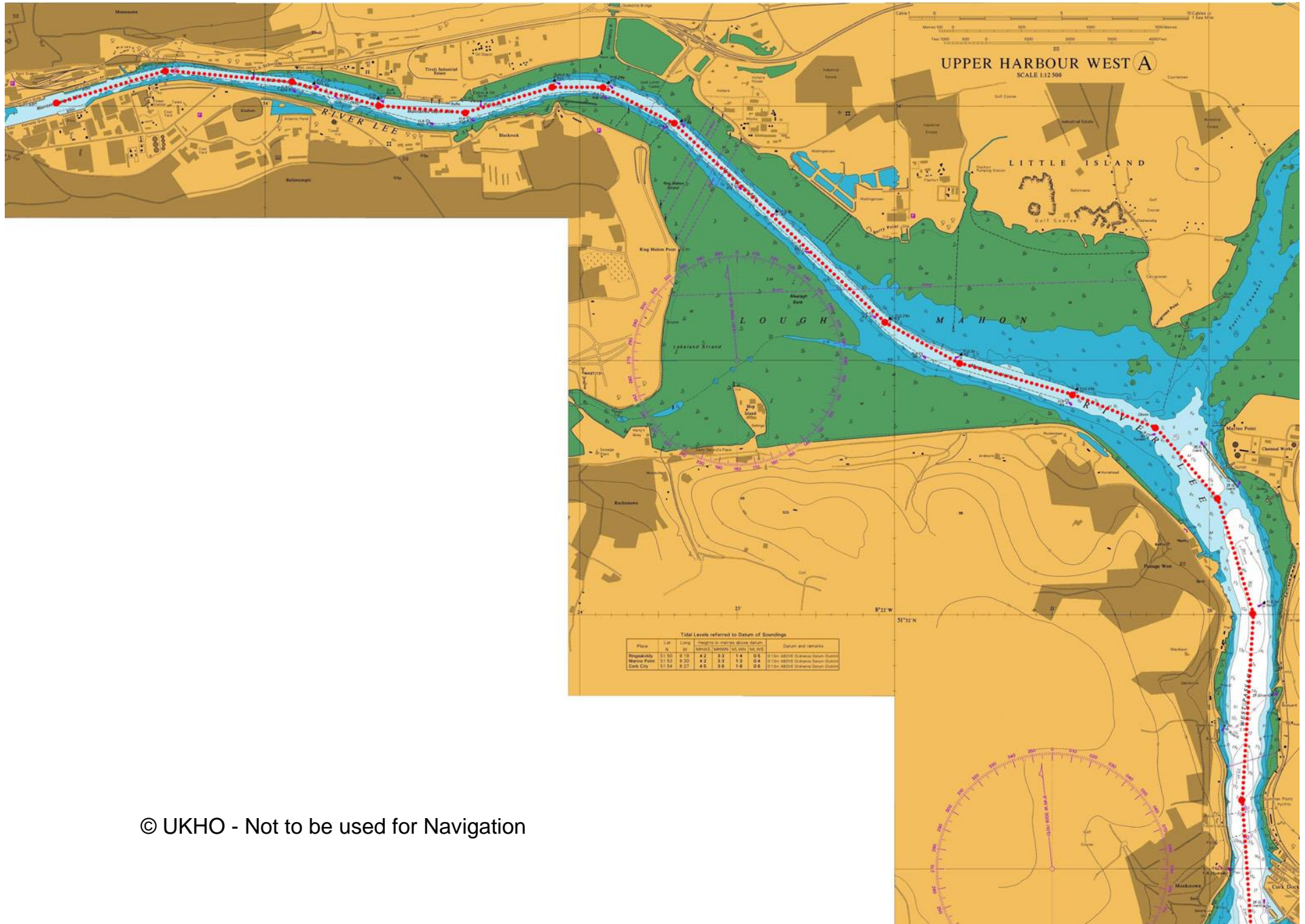


Passage Plan No. 15
Pilot Station No. 2 to City Quays (15.9')

w/p	Description	Latitude	Longitude	Co.°T	Dist'	Remarks
1	Pilot Station No. 2	51°45.10'N	008°15.20'W	355	3.1'	<ul style="list-style-type: none"> Board vessel exchange Pilot / Master Information Brief Master on Passage Plan Report to Cork Harbour Radio Ch 12 for traffic update Contact Tugs (if applicable) and inform of intentions Report to Cork Harbour Radio Ch 12 on passing Roches Point
2	White Bay	51°48.20'N	008°15.70'W	335	0.9'	
3	Off No. 5 Buoy	51°49.00'N	008°16.30'W	006	0.6'	
4	Off No. 7 Buoy	51°49.60'N	008°16.20'W	027	0.7'	<ul style="list-style-type: none"> Reduce speed passing Whitegate Marine Terminal
5	Off No. 9 Buoy	51°50.20'N	008°15.70'W	000	0.5'	
6	Off No. 11 Buoy	51°50.70'N	008°15.70'W	314	0.4'	
7	Off No. 13 Buoy	51°51.00'N	008°16.20'W	265	0.6'	
8	Off No. 20 Buoy	51°50.95'N	008°17.20'W	253	0.7'	
9	Spencers Jetty	51°50.75'N	008°18.20'W	228	0.5'	
10	Off White Point	51°50.50'N	008°18.65'W	242	0.4'	
11	Off Black Point	51°50.35'N	008°19.10'W	270	0.2'	
12	Off Pfizers Jetty	51°50.35'N	008°19.35'W	319	0.3'	
13	Monkstown Bay	51°50.60'N	008°19.70'W	355	0.7'	<ul style="list-style-type: none"> Call shore mooring personnel and confirm berth and ETA at berth
14	Off Summer Point	51°51.30'N	008°19.80'W	005	0.7'	
15	Passage West	51°52.00'N	008°19.70'W	344	0.6'	
16	S. dn @ Marino Point	51°52.50'N	008°19.90'W	309	0.3'	
17	R2	51°52.70'N	008°20.30'W	294	0.4'	
18	R1	51°52.85'N	008°20.85'W	283	0.4'	
19	R3	51°53.00'N	008°21.60'W	298	0.3'	
20	R5	51°53.15'N	008°22.06'W	313	1.2'	
21	R14	51°53.95'N	008°23.43'W	288	0.3'	
22	Blackrock Castle (East)	51°54.10'N	008°24.00'W	259	0.3'	

23	Blackrock Castle (West)	51°54.06'N	008°24.00'W	258	0.2	
24	Tivoli Ro/Ro	51°53.96'N	008°24.80'W	277	0.3	
25	R19	51°54.00'N	008°25.30'W	288	0.3	
26	R24	51°54.10'N	008°25.80'W	278	0.5	
27	Marina Corner	51°54.15'N	008°26.60'W	248	0.5	
28	City Quays Swing Basin	51°54.00'N	008°27.35'W			• Report to Cork Harbour Radio when fast alongside
Speed						
Safe speed shall be observed throughout the execution of this passage. The speed shall be determined taking into account all prevailing circumstances and conditions including, the visibility, draft and manoeuvrability of the vessel, any port regulations and any other limitations applicable.						
Important Notes						
36 The Pilotage Passage Plan shown above is merely a recommendation of the preferred route to be taken by vessels when navigating in the indicated areas and any Pilot / Master should exercise his own discretion and be prepared to deviate from the plan when circumstances dictate so.						
37 This Passage Plan should be used in conjunction with the vessels own Plan. The vessels Bridge Management Team should monitor the passage throughout the operation using all available means, these shall include, but not be limited to, use of parallel indexing techniques .						
38 Vessels are berthed Port or Starboard side alongside depending on the prevailing circumstances and conditions.						





© UKHO - Not to be used for Navigation