

Passage Plan 2
Whitegate Marine Terminal to Pilot Station No.2 (5.1')

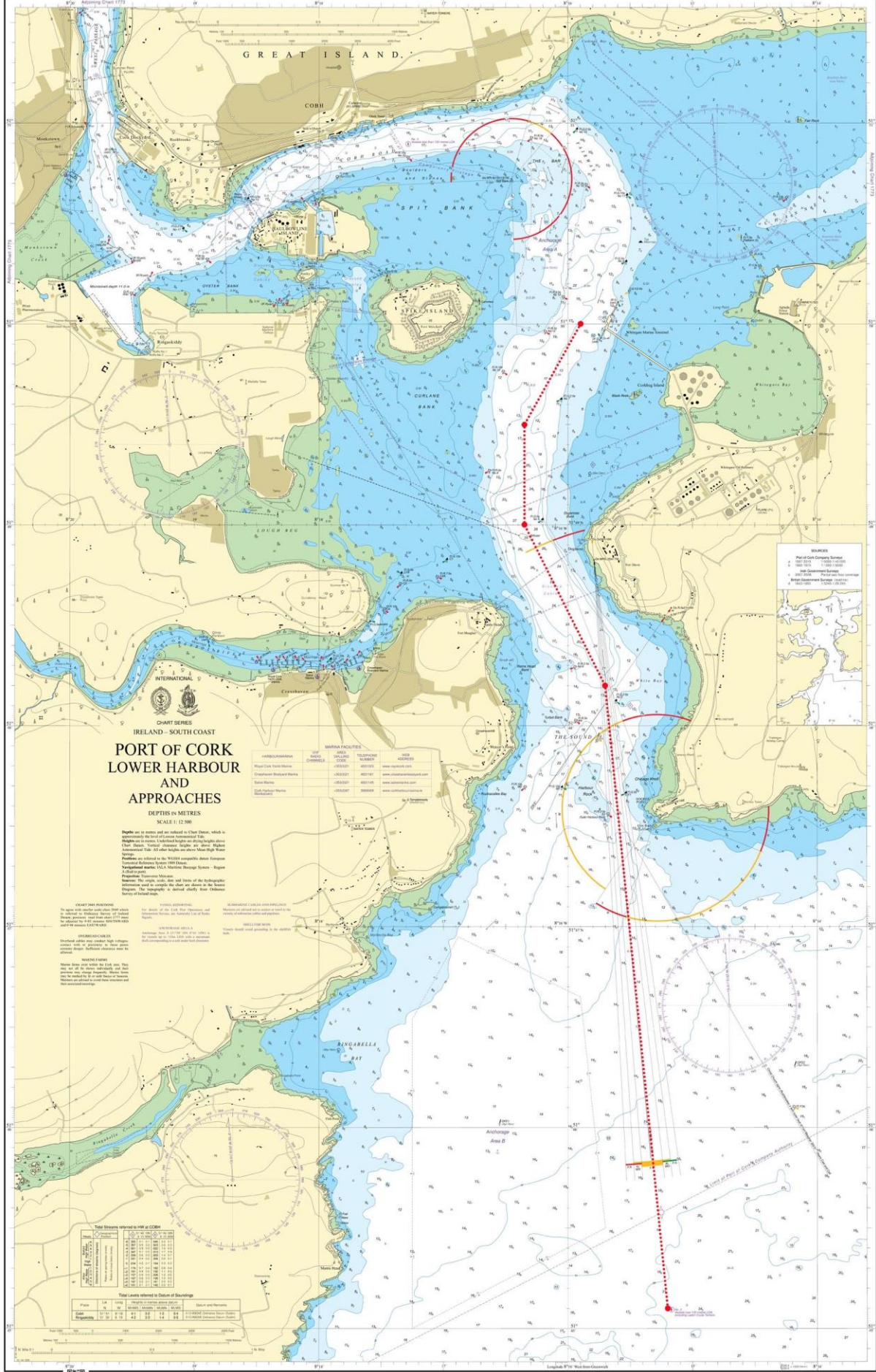
w/p	Description	Latitude	Longitude	Co.°T	Dist	Remarks
1	Whitegate Marine Terminal	51°50.00'N	008°15.90'W	209	0.6'	<ul style="list-style-type: none"> • Call Cork Harbour Radio and advise of intended departure. Request traffic update • Call Jetty personnel and advise of intentions • Call tugs (if applicable) and advise of intentions
2	E. of Curlane Bank	51°49.50'N	008°16.35'W	180	0.5'	
3	Off No. 5 Buoy	51°49.00'N	008°16.35'W	155	0.9'	
4	White Bay	51°48.20'N	008°15.70'W	175	3.1'	<ul style="list-style-type: none"> • Call Cork Harbour Radio when passing Roches Point outward • Reduce speed to 6-8 knots for Pilot disembarkation
5	Pilot Station No. 2	51°45.10'N	008°15.20'W			

Speed

Safe speed shall be observed throughout the execution of this passage. The speed shall be determined taking into account all prevailing circumstances and conditions including, the visibility, draft and manoeuvrability of the vessel, any port regulations and any other limitations applicable.

Important Notes

- 7 The Pilotage Passage Plan shown above is merely a recommendation of the preferred route to be taken by vessels when navigating in the indicated areas and any Pilot / Master should exercise his own discretion and be prepared to deviate from the plan when circumstances dictate so.
- 8 This Passage Plan should be used in conjunction with the vessels own Plan. The vessels Bridge Management Team should monitor the passage throughout the operation using all available means, these shall include, but not be limited to, use of **parallel indexing techniques**.



IRLAND - SOUTH COAST
PORT OF CORK
LOWER HARBOUR
AND APPROACHES

DEPTHS IN METRES
SCALE 1:12 500

Table with 4 columns: VOR FACILITIES, NAME, CHANNEL, TELEPHONE, NOTES. Lists various VOR stations like 'CORK VOR (M) 5130.0' and 'CORK VOR (M) 5130.0'.

DEPTHS IN METRES... CHART SYMBOLS... CHART DATA... CHART SYMBOLS... CHART DATA...

Table with 2 columns: Tide Level, Height in metres above datum. Lists various tide levels like 'High Water', 'Low Water', etc.