

NOTICE TO MARINERS

NO. 14 OF 2024

Construction works at Ringaskiddy Basin

This notice should be read in conjunction with:

- Chart 1777/1773

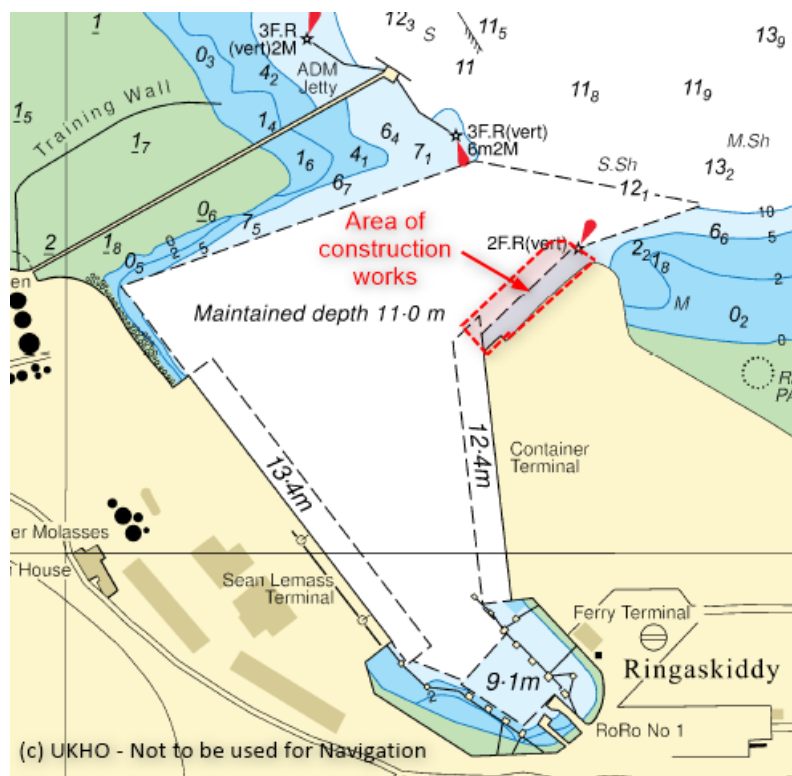
Mariners are advised that construction work has commenced on an extension to the quay wall at Cork Container Terminal in Ringaskiddy Basin. Works will include associated piling and civil works at the site area. The works will conclude in October 2025.

Marine Plant currently employed is limited to a small jack up barge, workboat and safety boat. This marine plant may be supplemented from time to time. All marine plant will be monitoring VHF channel 12 when operating beyond the site area.

Any construction vessels will display appropriate lights and shapes as per international collision regulations.

Generally, the construction works will not affect berthing at other commercial berths within Ringaskiddy basin. Cork Container Terminal will have limited overhanging area at the northern end of the existing berth, but will not be restricted on the berth itself.

Mariners are advised to keep clear of the construction area at all times.



BY ORDER,

CAPTAIN P. O'REGAN,

HARBOUR MASTER

Port of Cork Company, Tivoli Terminal Building, Tivoli Docks and Industrial Estate, Cork