



NOTICE TO MARINERS

NO. 5 OF 2026

Project cargo loading operations at Cork Dockyard to

“Zhong Ren 122”

This notice should be read in conjunction with:

- BA Charts 1777/1773

Please note that from Friday 20th of March 2026 loading operations of project cargo (3 x ship to shore container cranes) are planned to commence at Cork Dockyard transferring onto the vessel ‘Zhong Ren 122’. The critical phases of these operations are planned as follows:

- Heavy lift operation 1 – Friday 20th March 2026 1300 – 1900 hrs
- Heavy lift operation 2 – Saturday 21st March 2026 1400 – 2000 hrs
- Heavy lift operation 3 – Sunday 22nd March 2026 1500 – 2100 hrs
- Sea lashing and conducting of ancillary equipment loading will occur between Friday 20th & Saturday 28th March 2026
- Sailing of Zhong Ren 122 is tentatively set for PM Saturday 28th March 2026 weather permitting.

Please note the above times are subject to change.

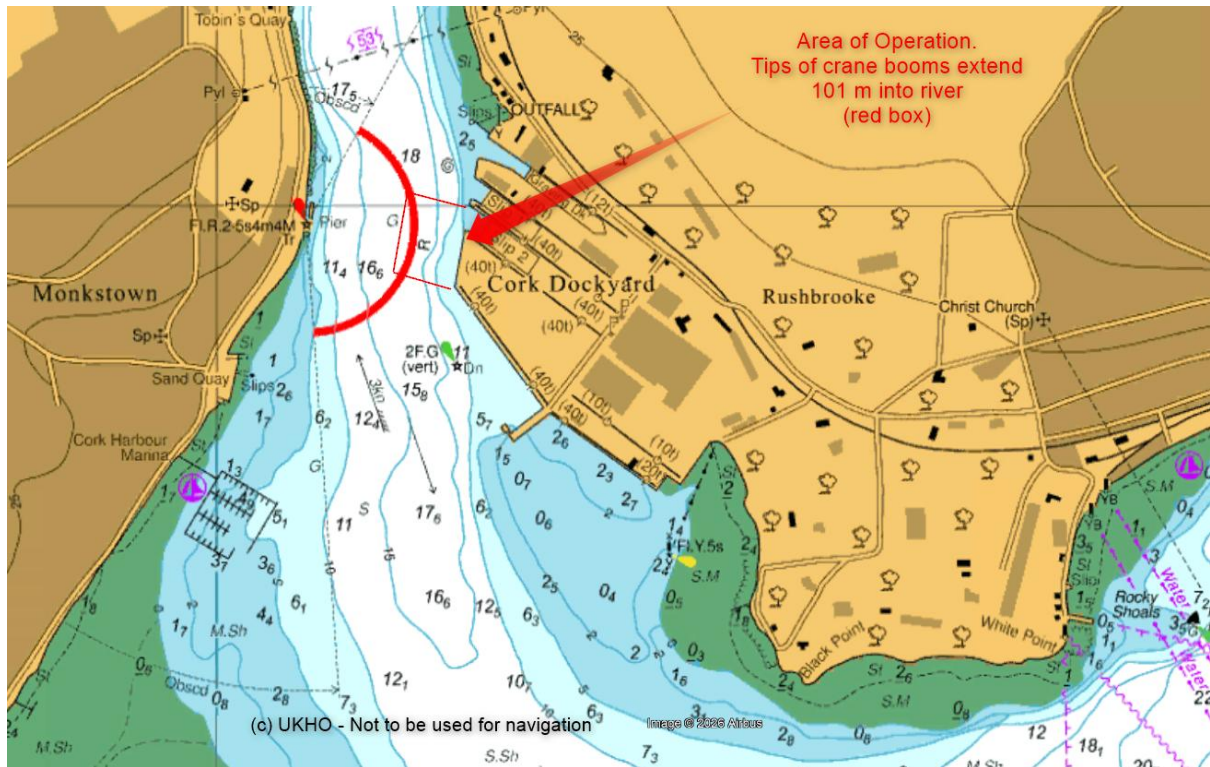
During the critical phases of the loading operations a tug will be pushing alongside the vessel and commercial vessel traffic will be restricted when navigating in the vicinity of Cork Dockyard to facilitate safe operations.

Vessels navigating in the area must contact Port Operations ‘Cork Harbour Radio’ on VHF Channel 12 for details of any loading operations, and associated navigation restrictions. Passing shipping may be suspended for larger vessel, or speeds limited to the minimum to maintain steerage with zero visible wash (or not greater than 6 knots in still water) for smaller vessels during the critical phases of the loading operations and vessels must navigate a safe distance from the Zhong Ren 122.

Once loaded the crane booms will project into the river by 101.5 metres from the quay wall and a height between sea level to the underside the crane boom of 43 metres (see diagram below).

Vessel Masters & operators are requested to navigate in the area of Cork Dockyard at a safe speed and producing no visible wash for the duration of Zhong Ren 122’s stay at Cork Dockyard. Vessels are further requested to keep a sharp lookout and to closely always monitor VHF Channel 12 for information updates. Please note that above times may change due to a variety of factors with details being transmitted via Cork Harbour Radio (VHF Channel 12).

During the departure of the Zhong Ren 122, the vessel will back southwards to an area south of Cork Dockyard, swing and then proceed to sea. The overall width of the vessel (in air) will be 135m while the beam of the vessel itself will be 40m. For the duration of the outbound passage no opposing traffic will be permitted.



By Order,

Nicholas Bourke

Harbour Master

Port of Cork Company, Tivoli Terminal Building, Tivoli Docks & Industrial Estate, Cork, Ireland

